



**NOANDISHAN ARYA**  
PROCESS & ENERGY ENG. CO

**Noandishan Arya Process &  
Energy Eng. Co.**

Unit 6, No. 35, 2<sup>nd</sup> Lane, Shah  
Nazari St., Mohseni Sq.,  
Mirdamad Blvd., Tehran  
1547936515, Iran  
Tel +98-21-22250133  
Fax +98-21-22254061

[www.napeec.com](http://www.napeec.com)

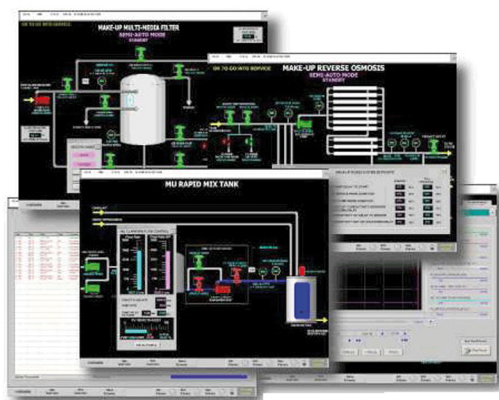


ISO 9001 : 2008  
10-Q-20271-TIC

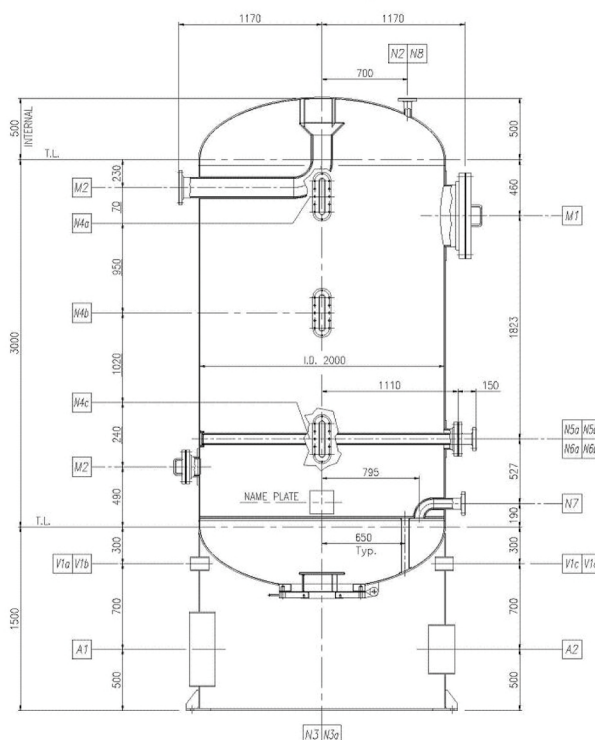
## DEMINERALIZATION PLANTS

NAPEEC (Noandishan Arya Process & Energy Engineering Company) designs and supplies demineralization plants for the production of make-up water to boilers and of process water to Refineries and Petrochemical Plants.

NAPEEC technology is based on ion exchange resins arranged in both compact and expandable beds and includes co-flow and counter-flow regeneration techniques, in accordance with the specific convenience of each project. Condensate polishing and special applications are available on request.

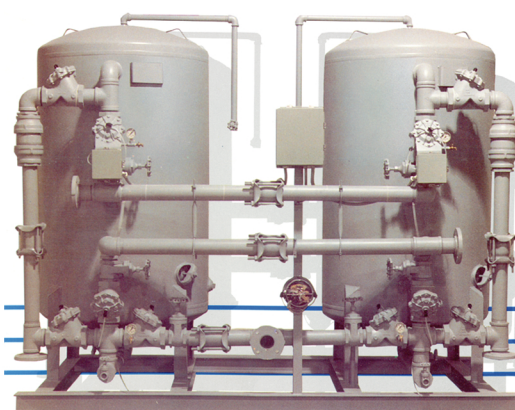


Fully automatic options are available, with working/regeneration cycles governed through a PLC specifically programmed by NAPEEC's engineers.



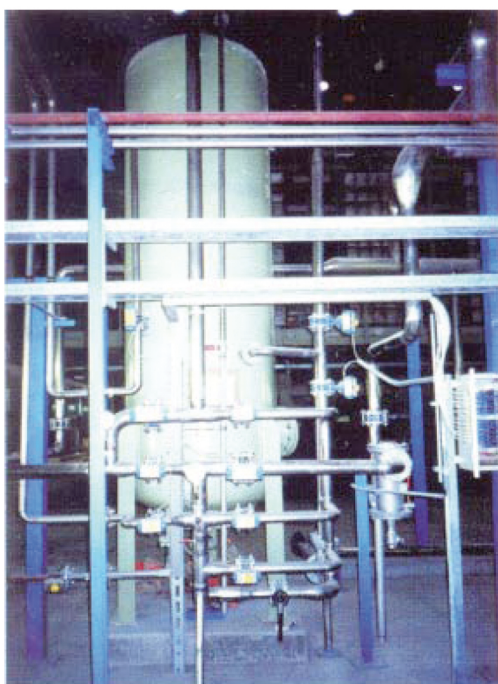
Mixed Bed Ion Exchanger

Particular care is devoted in the selection of materials and lining resistant to the corrosion potential of the regenerants and of the demin water. NAPEEC experience includes a wide range of materials in this respect, such as GRP, PP, PVC and stainless steel.



Our engineers are available to assist NAPEEC's customers in the selection of the most efficient process and the most convenient working conditions for the production of demineralized water.





#### **DEMINERALIZATION TRAINS**

- Cationic filters
- Decarbonation towers
- Anionic filters

#### **MIXED BEDS EXCHANGERS**

- Polishing of recirculating condensate
- Finishing treatment of demineralized water
- Finishing treatment of desalinated water

#### **SOFTENERS**

- Reduction of  $\text{CaCO}_3$  hardness

#### **SPECIAL APPLICATIONS**

- Recovery of heavy metals
- Brine softening units



#### **REGENERATING CHEMICALS**

- Storage and vent control
- Dosing systems

#### **NEUTRALIZATION SYSTEM**

- Automatic PH control
- Recirculation/Disposal switches

#### **SAFETY REQUIREMENTS**

- Emergency shower/eyebath
- Acid/Soda segregation panel

#### **SKID ARRANGEMENT**

- Preassembly of piping and valves
- Entirely skidded units
- Prewired boards with integrated PLC
- Synoptic panel available on request
- Video pages available on PC monitor

